



# CASE STUDY

CEF Online Distribution Centre  
**2020 - Total Waste Management**

Waste Management | WEEE Recycling | IT Asset Disposal | Compliance Services



More than 25% cost saved per annum

Hazardous materials are consigned compliantly and treated accordingly

The site is 'fit for future'



in terms of rapid market growth and control of waste management



Site is 100% Landfill diverted on all waste

Improvement in Recycling from site to 60% by weight

# CEF ONLINE DISTRIBUTION CENTRE

The Waste Experts team have been in collaboration with CEF Online, in its state-of-the-art facility since early 2020. The distribution centre is focused on delivering electrical wholesale to the mass market.

Waste Management plans in place became quickly overcome by volume, as the business experienced rapid growth. The way of managing waste had to change, to enable CEF to focus on the core business of online sales.

Waste Experts completed an audit in February 2020 and indicated several simple and effective changes that could be considered with minimal disruption to the business, whilst creating a scalable plan for growth in the business. The plan was to take effect over a 3 month mobilisation period managed solely by the Waste Experts team. The plan took several operational considerations into motion as follows;

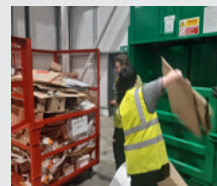


## Cardboard Management

The site now segregates all cardboard into bespoke cages for safe movement around the facility. This in turn is baled in a brand new MX600 Baling Unit (available to purchase or rent) allowing bales to be produced, which are then sold on as commodity recycling from the site. Each bale has the capacity to process cardboard recycling from 10 cages. The improvements delivered include less skip movements off site, increased revenue from recycled material, and reduced cost of reprocessing the material the way it was previously presented. The site now also has a safe and continuous method of waste management practice with less staff recourse contributing to this delivery.



General Bulky Waste Previously



New Cardboard Baling Process



Cardboard Bale Created (For Sale)



## General Waste Management

As a large distribution centre much of the waste generated is of a dry nature. From packaging products to damaged pallets and wrapping items. The site is also the workplace of over 300 staff, so day to day office and canteen waste is also a considering factor. Previously the waste was managed across the site with various receptacles by the sanitation team. It was then loaded into a bulk waste skip for a daily collection, and treated off site. In collaboration with CEF Online, it was identified that even by reducing Cardboard waste in the skip, there was potential for a new approach to managing the waste, which allowed for continued safety at the facility, whilst being 'fit for growth' in the future. It was presented that the best method to control these requirements was by introduction of a Static Compaction Unit, which allows the site to tip and compact their own waste in a safe environment on site. By introducing this method of waste management, the site has now managed all the waste previously tipped into a skip, by safely loading bins which can be wheeled around the site and tipped into a compaction unit offering a 6:1 improvement on waste movement off site. Full training was provided on site with all sanitation staff to ensure safe use of all equipment installed. Certificates were provided for staff records.

In addition to the introduction of this compaction unit, state of the art telematics have been built in, so that the unit can email the supply chain for emptying when it gets 75% full and can be diagnosed remotely if a fault occurs. This once again allow our client to focus on the core business, whilst we manage the waste movements off site.



General Bulky Waste Before



New Compaction Process (With Bins)



Safety Cage Fitted and Safety Training Provided



## Other Wastes

In addition to the main volumes of waste created at this site, Waste Experts have ensured that the client is doing everything possible to generate value and be environmentally responsible. Much of the product related waste at site is also managed through best practice techniques. All Lamp and Electrical waste is collected and consigned back to our very own specialist treatment facility in Huddersfield. The cable waste is collected and traded through a metal re-processor, and confidential waste is treated compliantly with data protection and GDPR as a direct focus.

Additionally, pallets are now stacked and collected for re-use or bio-mass treatment, and bespoke hazardous wastes that are onsite are now also contained and managed accordingly (predominantly batteries and oils).



UN Approved Battery Stillage



Stacked Pallets for Re-use



Cable Cages now Introduced



Confidential Shredding Collection



## Innovations

With the introduction of machinery and compaction equipment on site we have ensured the site is using the most technological equipment available on the market. The innovations introduced not only include the physical processes on site, but that the technology ensuring the payloads are maximised, and that non-confirming waste are treated accordingly.

The site is now able to monitor and control the waste being produced, and with detailed reporting on all areas of waste management, we will be able to provide advice on how to reduce waste being created, and value the improvement not only financially, but with a view to ensuring the site upholds its responsibilities to the environment, by utilising waste hierarchy principles.